



Datalarm™

Temperature Monitoring/ Data Logging System.



Foodservice - Schools - Institutional Kitchens
 Industrial Monitoring - HACCP - Walk-In Coolers
 Cafeterias - Industrial Processes - Bio Medical
 Stadiums - Hotels - Universities - Real Time
 Labs - Environmental Rooms - Blood Banks -
 Web Enabled - Greenhouses - Operator Safe

Food Service
 Is - C
 pe - F
 ospit
 frige
 Netw



MODULARM CORPORATION

20 Railroad Ave. E. Northport, NY 11731 • Ph: 631.261.9617 • Fx: 631.261.9617
 e-mail: info@modularm.com • web: www.modularm.com

Datalarm™

Temperature Monitoring/ Data Logging System.

It's Saturday evening, you're at a friend's house for a barbecue and your cell phone rings. The e-mailed text message reads: "WALK-IN FREEZER. HI-TEMP. 20 F".

That's too warm, so you borrow your friend's computer, go online, and log onto your **Datalarm System**. Seconds later, you're seeing what's going on at your facility in *real time*. To see a historical report, you plot a graph or generate a list of temperatures over the last few hours. Convinced that you have a problem, you contact your maintenance people and arrange to meet them at your facility. You have to leave the barbecue, but disaster is avoided and your product is safe.

The **Datalarm System**:

- ✓ Constantly monitors against product loss caused by refrigeration failure, power failure or user mishaps.
- ✓ Alerts you when product is in danger.
- ✓ Let's you view compartment status in real time from a single computer, on a local network or over the Internet.
- ✓ Generates historical reports of temperature performance and compartment status for analysis or for help with HACCP compliance.

The **Datalarm System** is designed for simplicity in every aspect of use, from the easy-to-use alarm panels that install onto your monitored compartment, to the real time status and the historical reports generated through your computer using an ordinary web browser. Finally, there is no software to install because the **Datalarm System** has it's own server, the **Datahub**, which has **Dataware Software** built right in.



2-Point Alarm
Surface Mount



1-Point Alarm
Surface Mount

The **Datalarm**, the same size as the widely specified **Model 75 Temperature Alarm**, is offered in a single point (**Datalarm 1**) or in a two point (**Datalarm 2**) configuration. Primarily designed to function as part of the **Datalarm** System, both units can also be used as “Stand-Alone” alarms, providing standard audible, visual and remote notification capabilities.

Features: (Full features and specifications on Page 6)

- **Autoset™** (Patent Pending) - Eliminates the need for manual programming in most common applications. Typical Cooler and Freezer settings are built right in, and **Autoset** reads the compartment temperature and automatically selects the right settings to use.
- Easy manual programming on the alarm itself when required.
- Built-in flash memory for storage of historical data including monitored temperatures and alarm events. (Stores over 300 days of data at default 6 minute sample rate.)
- Standard alarm configuration monitors Temperature and AC Power.
- Optional “Check Door” monitoring. Panic (Entrapment) Alarm requires optional **IP-1** Illuminated Push Button. Panic Alarm and Door Ajar Alarm requires optional **DAC-55** Door Monitor with **IP-1**.
- Battery Backup with built-in recharging circuitry keeps the **Datalarm** fully operational in a power failure for up to 72 hours.
- **Datalarm** software is upgradeable via the Internet.



The large LED display, combined with bi-colored HI and LO alarm lights and a “Check Door” light, lets you see compartment temperature and status at a glance. Simple Two Button operation makes for ease of use.

The **Datahub**, a compact functionally integrated system server, provides a link between as many as 125 **Datalarms** and your computer, your computer network or the Internet. Intuitive, easy to use **Dataware** Software for system access is built right into the **Datahub** itself, so there is no special software to install. Once connected, the **Datahub** is accessed on your computer using an ordinary web browser.

Features: (Full features and specifications on Page 6)

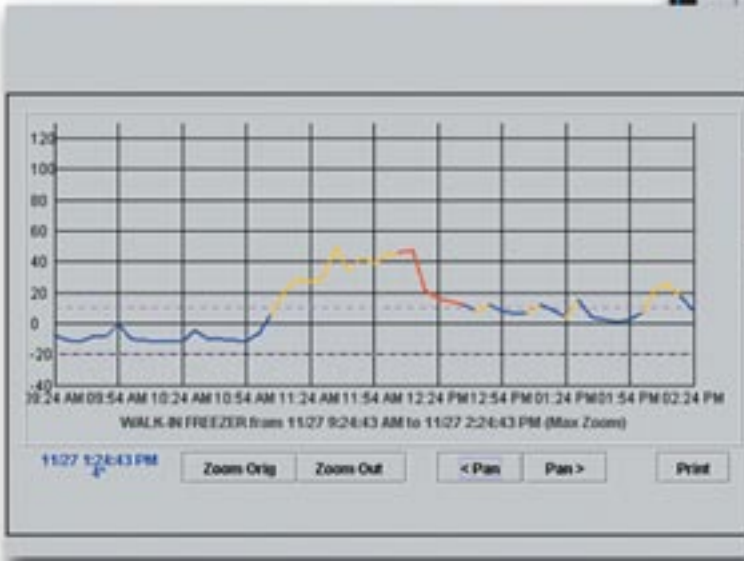
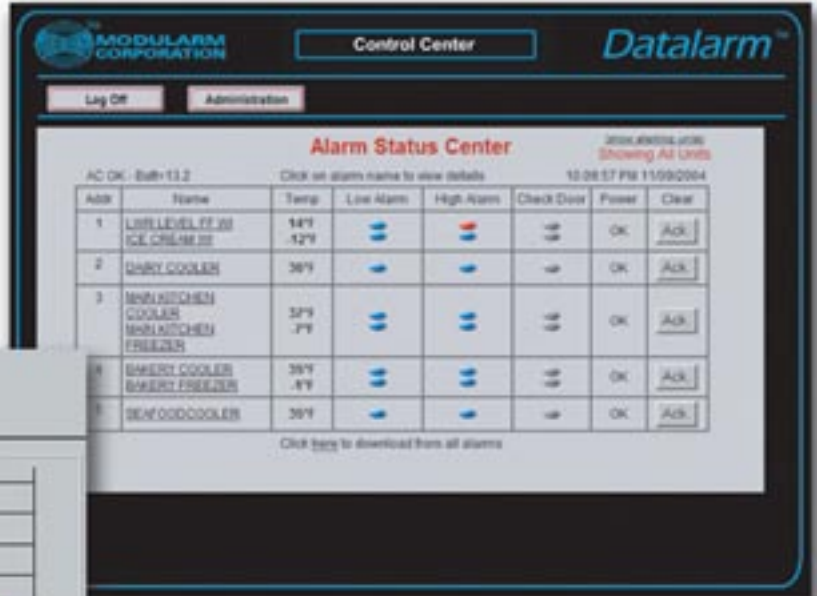
- **Datalarms** are completely programmable from a computer via the **Datahub**.
- **Web Enabled.** (Broadband access at installed location required.)
- Built-in real time clock for time and date stamping of data.
- **E-mail capable.** The **Datahub** will generate email when alarms occur and will notify up to four addresses of the location and type of alarm condition.
- Integrates with optional **Automatic Telephone Dialer** for voice notification of alarm conditions. (Dialer is programmable with up to four telephone numbers and a 16 second voice message.)
- Connection from **Datalarms** to **Datahub** is made with standard CAT5 cable.
- Optional Radios may be used for wireless communication between **Datalarms** and the **Datahub**.
- Battery Backup with built-in recharging circuitry keeps the **Datahub** fully operational in a power failure for up to 24 hours.
- **Datahub** software (**Dataware**) is upgradeable via the Internet.



The **Datahub** comes pre-mounted in a steel enclosure which includes battery back-up. (Optional **Automatic Telephone Dialer** is shown.)

Real-Time Reports

The **Alarm Status Center** page lets you view monitored conditions in real time. Visual indicators on the computer screen duplicate the status indicators on the **Dataarms**. “Acknowledge” (Ack) buttons let you terminate alarm annunciation remotely from your computer.



Historical Reports

Graphs are easily created by selecting a monitored compartment and a historical time period that you wish to view. Multi-colored graph trace helps to identify monitored conditions. The zoom feature lets you view alarm events in detail. The graph also displays AC Failure and “Check Door” conditions. Historical reports may also be generated and stored in list form or in Excel/Access compatible format. (Excel and Access are trademarks of Microsoft Corporation.)



Datahub Server

Accessories



DAC-55 & IP-1

Add the **IP-1** Illuminated Push Button for Panic (Entrapment) Alarm or add the **DAC-55** Door Monitor and the **IP-1** for Panic and Door Ajar Alarm capability. The **DAC-55** also offers automatic control of compartment lights and automatic refrigeration interruption functions. (Replaces light switches and fan shutoff switches.) For expanded on premise annunciation, the horn and strobe light on the **DAC-55** can be made to activate when a temperature alarm occurs. (See **DAC-55** literature for more information.)



Radios

Optional 2.4GHz radios may be used for up to 500' of wireless communication between **Datalarms** and the **Datahub**.

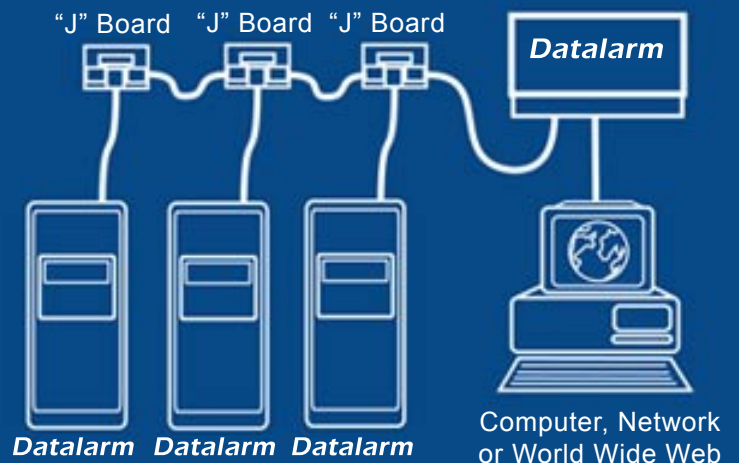


PC-1 Cover

The optional **PC-1**, a gasketed, polycarbonate locking cover for flush mounted alarms, provides protection against weather and tampering. The **PC-1** also fits over a flush mounted **Model 75 Temperature Alarm**.

Wiring Diagram

"**J**" **Boards** (Junction Boards) and CAT5 cable are used to interconnect **Datalarms** and the **Datahub**. The Ethernet port on the **Datahub** connects to your computer or network for System Access using an ordinary web browser.



Datalarm™

Temperature Monitoring/ Data Logging System

Datalarm: Features and Specifications

- **Single probe (Datalarm 1) or two probe (Datalarm 2) configuration.** *Datalarm 2* provides monitoring of two compartments, alternately displaying compartment temperatures and compartment status lights at 4 second intervals. (Perfect for cooler/freezer combinations.)
- **Autoset™** Technology (Patent Pending) provides automatic alarm setup for common applications.
- **Easy manual programming** on the alarm itself lets you customize operating parameters to your specific application. (Also programmable by computer via the *Datahub*.)
- **Programmable Operating Parameters and Ranges:**
 - **Scale:** F (Fahrenheit) or C (Centigrade).
 - **HI Setpoint & LO Setpoint:** Range: -40°F to 125°F, (-40°C to 52°C)
 - **Alarm Delay:** (Overrides normal rises in compartment temperature.) Range: 0 (no delay) to 150 minutes in 1 minute increments.
 - **Ringback Delay:** (Ringback provides repeated alarm annunciation at regular intervals during an alarm condition.) Range 0 (no ringback) to 150 minutes in 1 minute increments.
 - **Alarm Relay Configuration:** (N/O & N/C Dry Contacts, 2 A. @ 120VAC or 24VDC.)
 - **Off** - No relay activation. (Selected when relay is not being used to maximize battery life in a power failure.)
 - **Unlatched** - Relay activates when alarm occurs and de-activates when "Silence" button is pressed. (Selected when relay is activating secondary annunciation such as a strobe light.)
 - **Latched** - Relay activates when alarm occurs and de-activates when alarm condition clears. (Selected when relay is activating a building management system.)
- **Data Sample Rate:** (For Data logging. Accessible by computer via the *Datahub*.) Range: 10 seconds to 40 minutes in 10 second increments.
- **Built-in Flash memory** for storage of historical data and monitored events. Capacity: 8 days at 10 second Data Sample rate to over 5 years at 40 minute Data Sample Rate.
- **Standard alarm configuration** monitors temperature and AC Power.
- **Optional "Check Door" Monitoring.** Panic Alarm (Entrapment) requires **IP-1** Illuminated Push Button. Panic Alarm and Door Ajar Alarm requires optional **DAC-55** Door Monitor with **IP-1**.
- **Large .8" LED Display** for easy reading of temperature(s).
- **Bi-colored HI & LO Alarm LED's** provide easy reading of compartment status. Monitored conditions shown are:
 - Constant Blue = Safe Temperature.
 - Blinking Red (HI or LO) = Abnormal Temperature.
 - Constant Red (HI or LO) = Alarm Condition
- **"Check Door" LED** for Panic Alarm and Door Ajar Alarm indication.
- **Audible:** Piezo buzzer, 3.8kHz, SPL - 85db @ 30cm. TYP.
- **Battery Backup** with built-in Bootloader for alarm software upgrades. (Software is upgradeable locally or over the Internet via the *Datahub*.)
- **Temp Range:** - 40°F to 125°F, (-40°C to 52°C). Standard 25' sensor line.
- **Accuracy:** +/- 1°F from -25°F to 70°F, (-32°C to 21°C), +/- 2°F, full range.
- **Dimensions:** Surface Mount - 9"L x 4"W x 1.8"D, Flush Mount - 10.375"L x 4.75"W x 1/8"D
- **Power:** 120VAC, 45ma (240VAC optional.) Transformer is built in.

Datahub: Features and Specifications

- **Intuitive, easy to use Dataware software** for system access is built into the *Datahub*. *Dataware* software is accessed using an ordinary web browser.
- **Web Enabled.** (Broadband access at installed location required.)
- **Built in Modem** for remote access from any computer. (Used when broadband access is not available.)
- **Password Protected** with two levels of password security.
- **Built-in Real Time Clock** for time and date stamping of data.
- **Up to 125 Datalarms** may be connected to the *Datahub* using "J" Boards (Junction Boards) and CAT5 cable. (See Wiring Diagram.)
- **Optional Radios** provide wireless connection between *Datalarms* and the *Datahub*.
- **Email Capable.** (Provides notification of up to four addresses regarding changes in alarm status.)
- **Automatic Telephone Dialer Compatible** (Dialer is optional) for voice notification of alarm conditions. (Dialer is programmable with up to four telephone numbers and a sixteen second voice message.)
- **Battery Backup** with built-in rechargeable battery and re-charging circuitry. (Battery keeps the *Datahub* fully operational in a power failure for up to 24 hours.)
- *Dataware* software provides the following functions from your computer. (Locally, over the Internet or via Modem):
 - **Remote Alarm Programming** lets you select or change *Datalarm* operating parameters, customize alarm names, etc.
 - **Real Time Status** lets you view temperatures and alarm conditions as they are occurring.
 - **Remote Acknowledge** lets you silence alarm annunciation.
 - **Historical Data Reports** lets you generate reports of temperatures and monitored conditions in graph form, list form or in Excel/Access compatible format. (Excel and Access are trademarks of Microsoft Corporation.)
 - **Built-in Bootloader** lets you upgrade *Dataware* software.
- **Dimensions:** (In enclosure) 12"L x 12"H x 3"D.
- **Power:** 120VAC @ 100ma.

WARRANTY: All systems and components manufactured by Modularm Corporation are warranted to be free from defects in material and workmanship under normal use and service for a period of one year from date of installation. If, during this time period and after examination, any Modularm system or component appears to be defective, Modularm agrees to repair or replace same. This warranty shall not apply to any system or component that has been altered or repaired by anyone other than a factory authorized representative. Modularm Corporation limits this warranty only to those systems and components which it specifically manufactures and its sole liability shall be to repair or replace these systems and components in accordance with the aforementioned terms, and assumes no additional liabilities. In no case will Modularm's liability exceed the purchase price paid for the product. No other warranty is expressed or implied regarding the sale or use of Modularm systems or components.

Copyright 2005. Modularm Corporation



MODULARM CORPORATION

20 Railroad Ave. E. Northport, NY 11731 • Ph: 631.261.9617 • Fx: 631.261.9617
e-mail: info@modularm.com • web: www.modularm.com